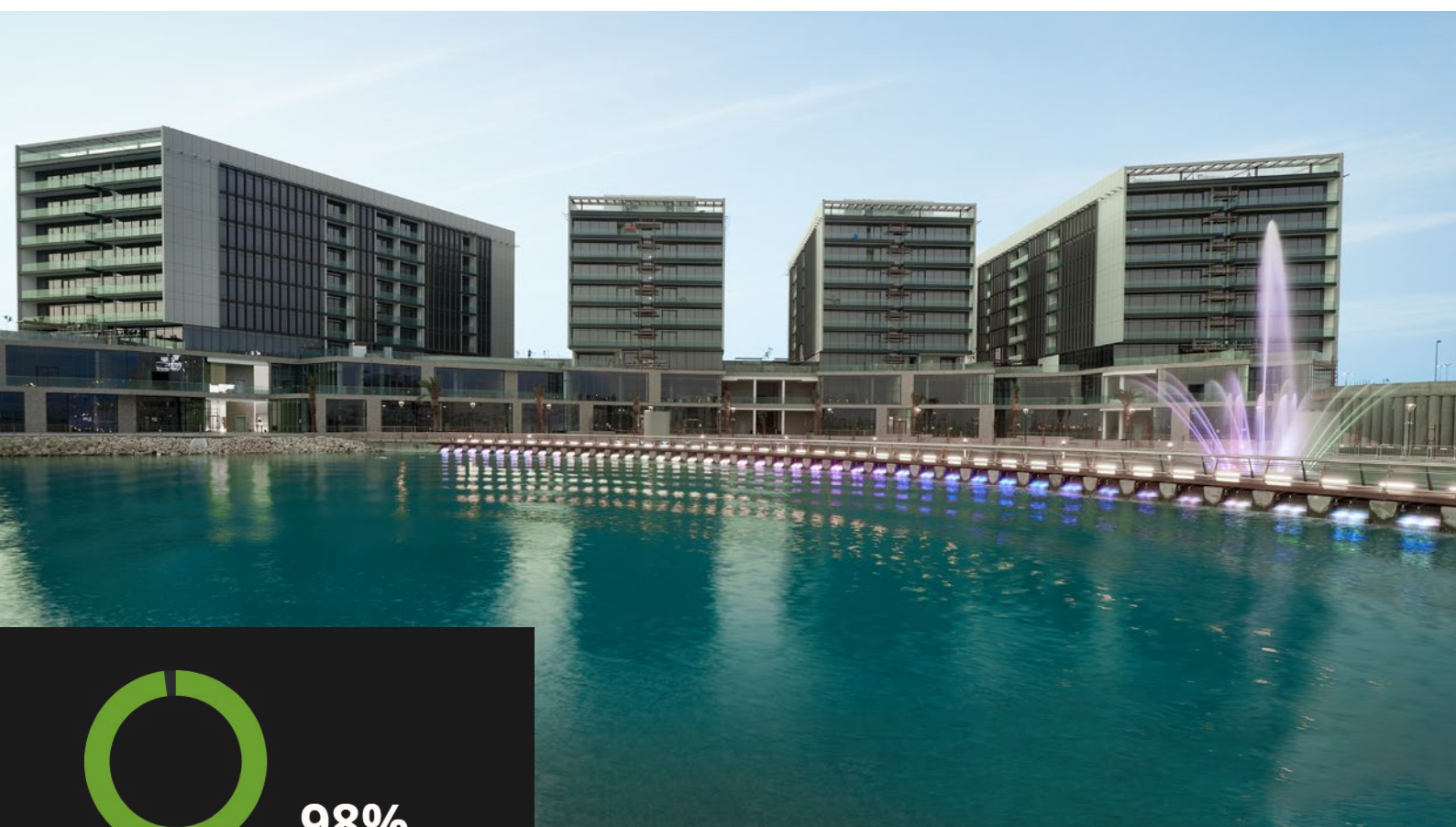


# AN AWARD WINNING VIEW IS COMING TO LIFE



98%

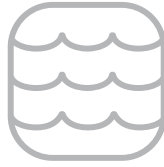


CANALVIEW

AT DILMUNIA

A PROJECT BY NASEEJ

PROJECT PROGRESS REPORT 6  
APRIL 2021



# CANALVIEW

AT DILMUNIA

A PROJECT BY NASEEJ 

## OUR PROFESSIONAL PARTNERS



CONTRACTOR  
Kooheji Contractors



ISMAIL KHONJI ASSOCIATES

ARCHITECT, INTERIOR &  
DESIGN SUPERVISION  
CONSULTANT  
Ismail Khonji Associates



D G J

QUANTITY SURVEYOR  
DG Jones



PILING CONTRACTOR  
Bahrain Foundation  
Construction Company W.L.L



MASTER DEVELOPER  
Ithmaar Development  
Company



PROJECT LOCATION  
Dilmunia

# SUMMARY OF CANALVIEW'S CONSTRUCTION PROGRESS

Project Progress  
98%

Construction progress remains positive with Program Progress.

98%

## CANALVIEW ONSITE PROGRESS MADE

- Overall project progress reaches 98%.
- The majority of main contractor scope of civil works have now been completed.
- Fully fitted out show apartments are now ready for viewing.
- Snagging works on all floors have been completed.
- Testing & commissioning of mechanical, electrical and plumbing in progress with temporary power.
- Kitchens are being fitted at a fast pace.
- Power and water is expected to be connected to the project in the coming few weeks.



### KEY HIGHLIGHTS

---

# OVERALL PROJECT PROGRESS

---

## PROJECT PROGRESS REACHES 98%

Naseej announces that CanalView has now reached 98% project completion and has now entered into the final and critical stages of project completion.

Overall construction work is moving at an accelerated pace, including the completion of aluminum and glass works on the external walls as well as the installation of windows and insulation.

Construction is also proceeding very well in other areas around the project, including the indoor and outdoor swimming pools, the social lounge, health club & gym, outdoor sports facilities and rooftop gardens, as well as the private gardens of several apartments within the project.

During Quarter one of 2021, two model show apartments were launched for customer viewing. At present two-types of apartments are now ready for viewing, a one- and two- bedroom apartment have been fully-fitted out with furniture, kitchens, appliances and electronics to give the viewer a complete idea of how their apartment can potentially look like once ready.



Fountains in front of the CanalView buildings



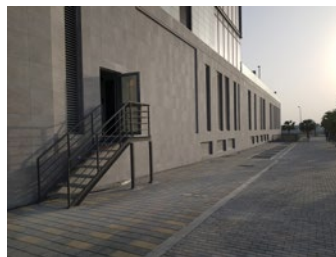
---

# CIVIL WORKS

---

## CIVIL WORKS ALMOST COMPLETE

The majority of the main civil works are generally complete. This can be seen with regards to the exterior of the buildings as well as the internal parts of the buildings, basement levels and upper and retail areas.



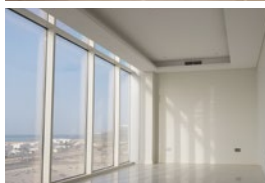
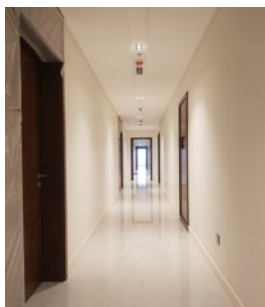
---

# SNAGGING WORKS

---

## COMPLETION OF SNAGGING WORKS ON ALL FLOORS

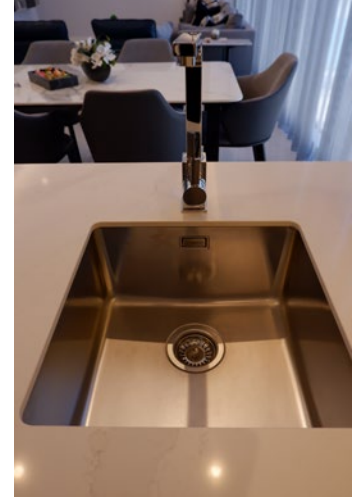
Snagging to all floors has been concluded as far as is practicably possible. As for de-snagging after Testing and Commissioning, that will come effect once the project has been officially handed over by the Contractor. Details on this to follow in future updates.



# TESTING & COMMISSIONING

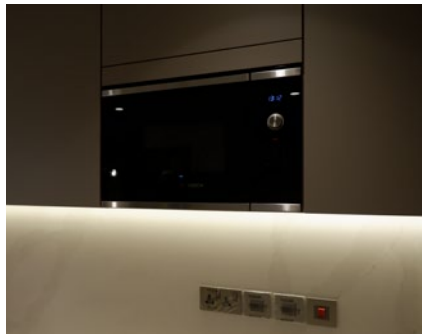
## TESTING & COMMISSIONING OF MEP IN PROGRESS

Testing and Commissioning of mechanical, electrical and plumbing scope of works has been undertaken from temporary power, this will be beneficial in reducing conclusion of all Testing & Commissioning once mains power & water are both "Live and online".



## KITCHENS BEING FITTED AT A FAST PACE

Overseas delivery from CanalView's German-made kitchens and appliances have been reaching the site and being fitted as per the program set for fittings. Regular deliveries have also been made of the Spanish-made siltstone worktops and being fitted as per strict schedules. Overall, the kitchens fittings are progressing positively well and deadlines are also being made.





---

# ELECTRICITY AND WATER UPDATES

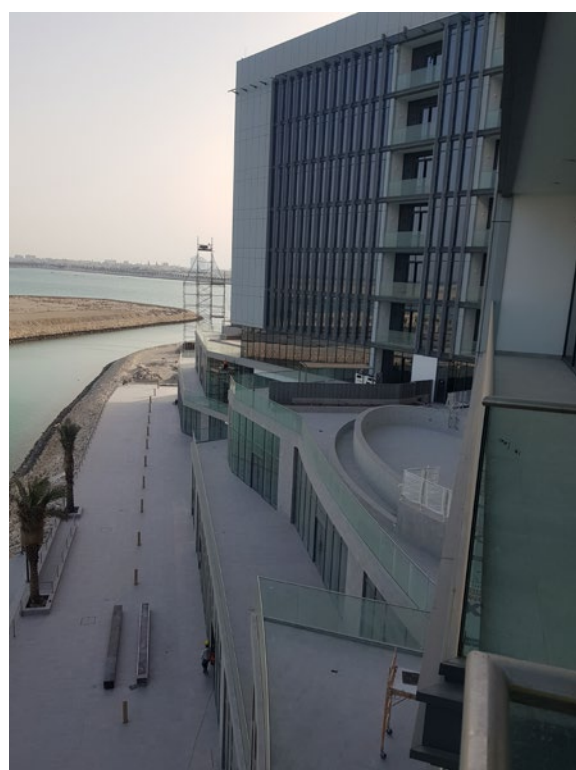
---

## POSITIVE PROGRESS ON FINAL EWA APPROVALS

WE EXPECT POWER & WATER VERY SOON

As we approach the final critical stages of project completion, we are also expecting the Project to be energized with power and to go “live” with permanent electric and water connections. We are expecting the project to be “live” in the coming few weeks.

- Project related installation for both Mains Power and Mains water have been completed for many weeks, but are still awaiting EWA final stage approvals, to trigger both mains connections.
- EWA: EDD Mains Power: Energization of CanalView’s substation completed. Permanent power supply will be available in the building after getting mains water connection in the building and completing the installation of individual electrical smart meters.
- EWA: WDD Mains Water: Installation of water main is completed. EWA nominated subcontractor is progressing with the installation of bulk meter. Final water connection will be concluded after the nominated subcontractor completes the installation of bulk & individual water meters.



---

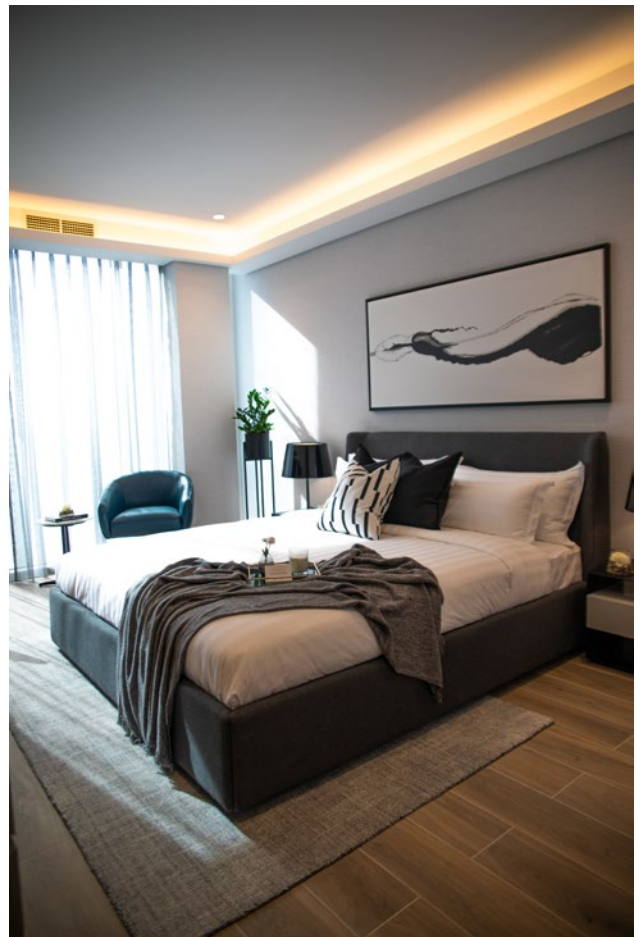
# SHOW APARTMENT

---



## SHOW APARTMENTS READY FOR VIEWING

CanalView project now offers two-types of show apartments ready for viewing; a one bedroom and a two-bedroom apartment located on the fifth floor of Tower 2. The apartments have been fully fitted-out with furniture, appliances, electronics and accessories for customers to get a real feel of what the apartments will eventually look like. Customers are welcome to view the apartments by contacting the sales team on **+973 16 51 11 11**. Visits are made during the week and customers are urged to pre-book as they will be accompanied by a member of the team.



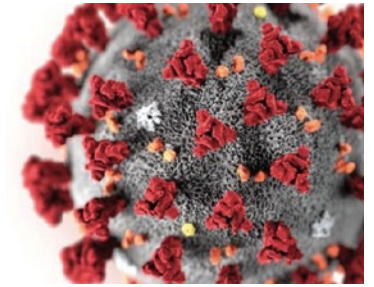


---

# COVID RELATED IMPACTS & RESTRICTIONS

---

## MATTERS EFFECTING PROGRESS



- The impact of COVID-19 second wave has caused detrimental delays to overseas deliveries of fitted kitchens, appliances and siltstone work surfaces and splash backs. We have tried our level-best to mitigate such delays by increasing the number of hours outside of official working times. This has helped compensate for some lost times.
- Access to Key Government Directorates is still restricted with no general access to Directorate authority offices, the knock-on effect to day-to-day business and government inspection and approval process is very restricted and detrimentally impacting timeframes.
- EWA [EDD & WDD] delays in concluding final mains connections has had a significant detrimental impact on program progress, the knock-on impact of delays to Mains Power and Mains Water connections, has regrettably pushed back concluding Testing & Commissioning and final de-snagging thereafter, with a revised EOT to completion of the End of May 2021.



---

# MASTER DEVELOPER UPDATES

---

## MAIN CANAL RELATED UPDATES

With regard to the latest developments related to the main canal and water features, we have witnessed the completion of phase one of the construction works to the main canal and water channel which is currently operating from the center of the island to the west side of Canal View. A beautiful opening ceremony was held in March 2021 to mark the launch of the Canal, waterways fountains and pedestrian footbridges.

The water passes through 5 main corridors, 2 of which are present at CanalView. These two water corridors include two pedestrian bridges, one of which runs down a waterfall next to dancing fountains to the tune of music and lighting. The first phase accounts for most of the construction in the canal and covers 50% of the total development work. The Dilmunia Canal Walkway project is nearing completion, which has been filled with water for testing and operational and will be open to the public soon.





CANAL VIEW

AT DILMUNIA

A PROJECT BY NASEEJ 

# IN THE NEWS





# شقتك المطلّة على ضفاف القناة المائية



حاصل على جائزتين مرموقتين ضمن جوائز العقارات العربية  
أفضل مشروع سكني تطويري في البحرين 2020-2021  
أفضل شقة سكنية في البحرين 2020-2021

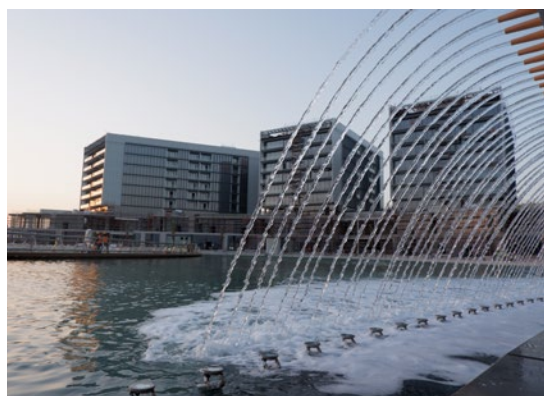
# CANALVIEW'S PROJECT PROGRESS

Article publishing date January 2021

Naseej announces that CanalView has now passed the 85% project completion mark, and has now entered into the final and critical stages of project completion.

Overall construction work is moving at an accelerated pace, including the completion of aluminum and glass works on the external walls as well as the installation of windows and insulation. Construction is also proceeding very well in other areas around the project, including the indoor and outdoor swimming pools, the social lounge, health club & gym, outdoor sports facilities and rooftop gardens, as well as the private gardens of several apartments within the project.

With regard to the latest developments related to the main canal and water features, we have witnessed the completion of phase one of the construction works to the main canal and water channel which is currently operating from the centre of the island to the west side of Canal View. The water passes through 5 main corridors, 2 of which are present at CanalView. These two water corridors include two pedestrian bridges, one of which runs down a waterfall next to dancing fountains to the tune of music and lighting. The first phase accounts for most of the construction in the canal and covers 50% of the total development work. The Dilmunia Canal Walkway project is nearing completion, which has been filled with water for testing and operational, and will be open to the public soon.





إعداد

محمد المساري

المساري

Real Estate

18

عدد 1993 لسنة 2017 - المجلد 1 - المجلد 1 - المجلد 1

## استكمال المرحلة الأولى من أعمال القنات المائية ..

# نسيج : إنجاز أكثر من ١٥٠٠ من مشروع «كنافيو»

أعلنت شركة نسيج (Nesj) إحدى شركات الطوق العربيّة، أنّها قد أنهت المرحلة الأولى من أعمال القنات المائية لمشروع «كنافيو» (Kanafe) في مدينة دبي، وذلك بعد أن تمّ إنجاز أكثر من 1500 من المشروع. وتحتوي القنات المائية على 1500 وحدة سكنية، وتتميز بتصميمها الفريد، حيث تمّ دمجها مع الطبيعة المحيطة بها. وتحتوي القنات المائية على 1500 وحدة سكنية، وتتميز بتصميمها الفريد، حيث تمّ دمجها مع الطبيعة المحيطة بها.

تحتوي القنات المائية على 1500 وحدة سكنية، وتتميز بتصميمها الفريد، حيث تمّ دمجها مع الطبيعة المحيطة بها. وتحتوي القنات المائية على 1500 وحدة سكنية، وتتميز بتصميمها الفريد، حيث تمّ دمجها مع الطبيعة المحيطة بها.

تحتوي القنات المائية على 1500 وحدة سكنية، وتتميز بتصميمها الفريد، حيث تمّ دمجها مع الطبيعة المحيطة بها. وتحتوي القنات المائية على 1500 وحدة سكنية، وتتميز بتصميمها الفريد، حيث تمّ دمجها مع الطبيعة المحيطة بها.

تحتوي القنات المائية على 1500 وحدة سكنية، وتتميز بتصميمها الفريد، حيث تمّ دمجها مع الطبيعة المحيطة بها. وتحتوي القنات المائية على 1500 وحدة سكنية، وتتميز بتصميمها الفريد، حيث تمّ دمجها مع الطبيعة المحيطة بها.

[illegible]





SCAN TO PLAY THE VIDEO

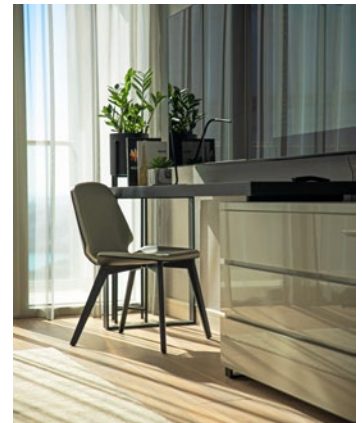
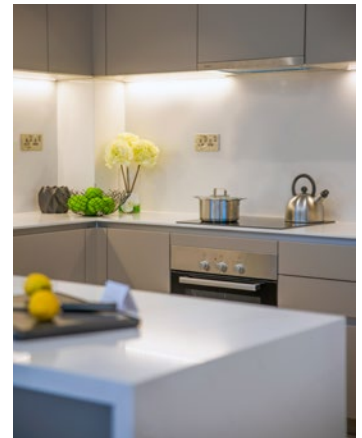
NASEEJ'S MANAGEMENT VISIT CANALVIEW'S  
LATEST SHOW APARTMENT



Naseej management standing at CanalView's main promenade

## NASEEJ'S MANAGEMENT VISIT CANALVIEW'S LATEST SHOW APARTMENT

Naseej's management and professional teams visited CanalView's recently completed mock-up apartments located on the fifth floor of tower two. They met on site during the month of March and toured the site and inspected all the main common areas and amenities, and then made their way up to view the show apartments.



Actual photos of the Show Apartment







Mr. AlSayed speaking during the opening ceremony of the Dilmunia Canal

## THE CANAL WALK AT DILMUNIA SET TO OPEN SOON

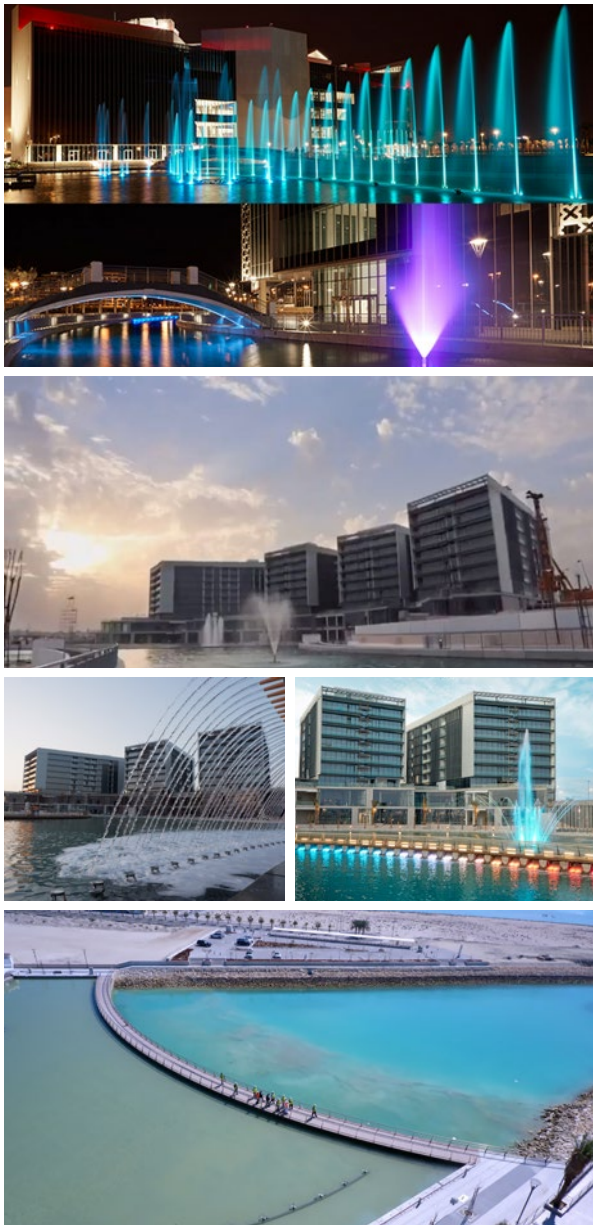
The much-awaited Dilmunia Canal project is set to open to the public. Envisioned as one of Bahrain's most popular scenic destinations, the 1.7km canal is the Kingdom's largest manmade water canal, stretching from the Dilmunia Marina in the north to Dilmunia Garden in the south. With a variety of water features, including waterfalls, innovative water jets and dancing colored fountains, this iconic venue will be a focal point of the island.

The Dilmunia Canal development is being managed by Ithmaar Development Company (IDC), the Development Manager of the 125-hectare Dilmunia megaproject. Dilmunia Canal was designed by Sogreah Gulf FZE – Artelia Group and constructed by Cebarco Bahrain SPC. The local Ansari Engineering Services supervised the construction.

IDC CEO Mohammed Khalil AlSayed said: "We look forward to welcoming visitors and residents to Dilmunia Canal Phase 1, to enjoy the fresh air and picturesque scenery, including the dazzling light and sound spectacle offered by the Dilmunia Fountain. In line with our commitment to delivering value for residents, visitors and investors, this latest development is expected to become the venue for many memorable events and a key attraction for families throughout the year. We also hope that the Dilmunia Canal and Fountain will be an interesting tourist attraction in Bahrain."



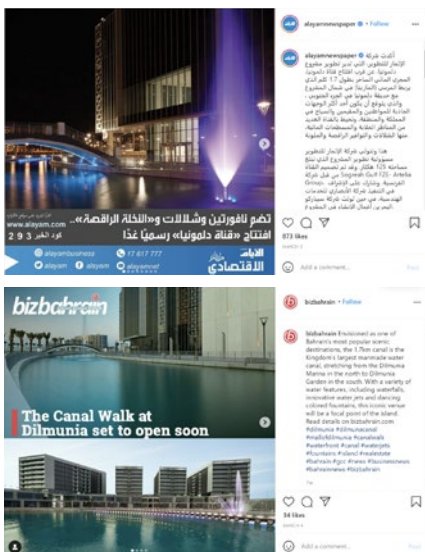
SCAN TO PLAY THE VIDEO  
THE OPENING CEREMONY  
OF THE DILMUNIA CANAL



The star attraction of Dilmunia Canal is the seawater-operated fountains which will create dazzling shows and choreographies by means of elegant and dynamic water jets against the backdrop of more than 1200 color-changing LEDs. There will be two musical fountains spread over more than 100-meter-long with multimedia fountains, which comprises variable height water jets that dance in synchronization with the music. Varying in width from 15 m to 35 m and stretching along the 1.7km length, the Canal will host, in addition to the dancing multimedia fountains, waterfalls and different water features: dancing "Palm Tree", bubbling Jets and Variojets, adopting the latest technologies in the field, which can create five different water patterns. The entire system is fully automated for a perfectly synchronized experience and is designed and realized by the German-based company OASE GmbH, one of the world's leading manufacturer of fountain technology, in cooperation with its Bahraini partner M.H. Al Mahroos BSC.

Upon completion, the Dilmunia Canal , encompassing the Canal Walk, will feature a high-end waterfront retail district where residents and visitors can enjoy shopping and dining in a vibrant community atmosphere. It aims to be a premier family-friendly venue for events ranging from food festivals, to art exhibitions and sports competitions. Dilmunia Canal provides a central link between the island's districts and is surrounded by public promenades, boardwalks, event plazas, and viewing decks. Walkways and bridges are strategically located across the canal, allowing visitors to admire distinctive water features such as the Waterfall crossing. The Dilmunia Canal will cross by existing projects like the CanalView and Hanging Gardens, two mixed-use projects constructed on the Canal edges and will meander around the Mall of Dilmunia, a destination by itself for the facilities and shopping experiences provided to visitors. A unique family-centric mall and entertainment facility that opened in April 2020.

Dilmunia is a mixed-use development built on a man-made island off the coast of Muharraq. With residences, a hotel, and leisure and shopping districts, this \$1.6-billion project will offer residents and visitors a way of life centered on holistic wellness.





VISIT OUR STAND

# CANALVIEW AT MALL OF DILMUNIA

Main foyer



Ramadan timing:  
Everyday  
10am - 5pm  
8pm - 12 midnight

After Eid Al Fitr timing:  
Everyday  
10am to 10pm

Contact: +973 16 51 11 11  
[www.CanalView.bh](http://www.CanalView.bh)





SCAN TO PLAY THE VIDEO  
 NASEEJ LAUNCHES TWO SHOW  
 APARTMENTS AT CANALVIEW

## CANALVIEW IS SHOWCASED AT THE MALL OF DILMUNIA

CanalView project is being showcased at the Mall of Dilmunia from March 21 in the main grand foyer. Visitors to the mall will get the opportunity to view all aspects of the project via a dedicated stand located in the main foyer of the Mall. The stand features a mega scale project miniature of CanalView as well as all marketing and sales material for customer viewing. The marketing stand is open daily from 10am - 10pm (During Ramadan the stand will open daily from 10am-5pm and then from 8pm-12 midnight.. For all inquiries please contact **+973 16 51 11 11** or visit **[www.canalview.bh](http://www.canalview.bh)**.



# CUSTOMER SERVICE SUPPORT

To our dear customers,

We take every pleasure in serving you and are committed to meeting the highest standards of customer satisfaction. Please feel free to contact us on +973 16 51 11 11, or +973 32322969, or visit [www.canalview.bh](http://www.canalview.bh).

Don't forget to catch up on all the latest updates via CanalView's instagram page @canalviewbh



Mr. Ahmed Ali  
Senior Manager, Property Sales

## STAY CONNECTED WITH US



+973 16 51 11 11



@canalviewbh



+973 32322969



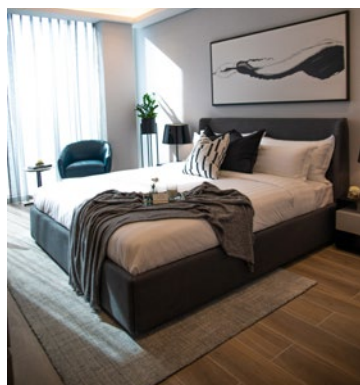
### A NEW LIVING EXPERIENCE AWAITS YOU AT CANALVIEW

Imagine a waterfront lifestyle set in an exquisite award winning development with promenade, overlooking a stunning canal with feature waterfalls and fountains that evokes luxury, comfort and serenity.

f t i @  
CanalViewbh  
+973 16 51 11 11

[www.CanalView.bh](http://www.CanalView.bh)

CANALVIEW  
A PROJECT BY NAUVE



# STAY CONNECTED WITH CANALVIEW



+973 16 51 11 11



[sales@naseej.bh](mailto:sales@naseej.bh)



[www.canalview.bh](http://www.canalview.bh)



[canalviewbh](https://www.instagram.com/canalviewbh)

A project by:

## NASEEJ



This report has been published by:  
Naseej BSC (c)  
Bahrain Financial Harbour  
Contact: +973 16 557999  
[www.naseej.bh](http://www.naseej.bh)